



2+



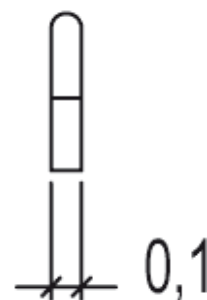
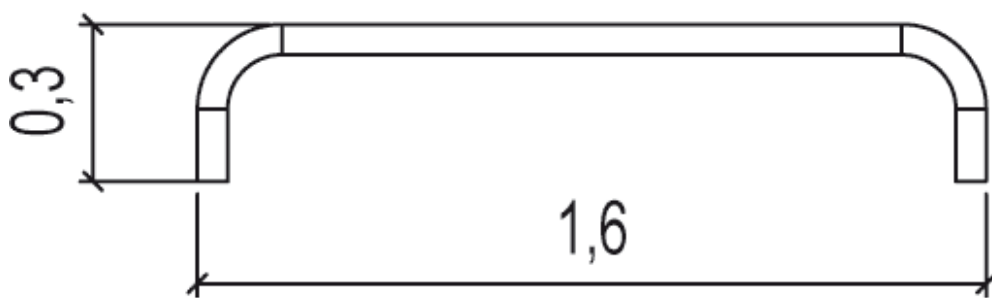
2



0,3m



1 = 1,6m 2 = 0,06m 3 = 0,3m



## Play value

balancing



## Accessibility



Motor disability

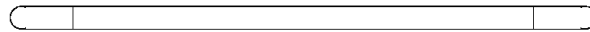


Sensorial Disabilities



Learning Disabilites

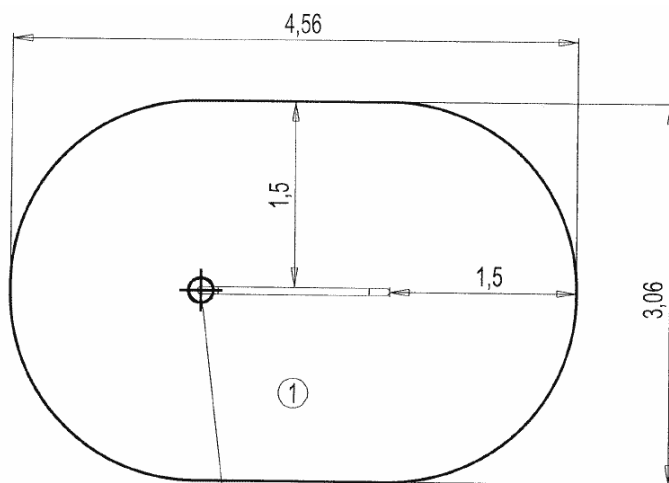






## Installation of equipment

Impact area =

-  Impact area
-  Free space



Point de Référence  
Setting Out Point  
Punto de referencia  
Bezugspunkt

		
1	0,30m	12m <sup>2</sup>



1



00h30



0.06m<sup>3</sup>



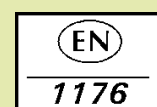
12m<sup>2</sup>



9kg



8kg



*Proludic*

2007-01-01