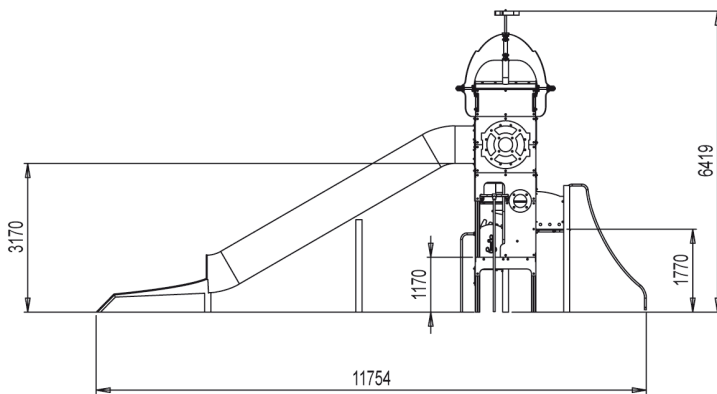




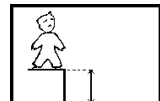
1=11.75m 2=2.3m 3=6.45m



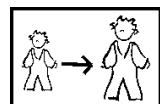
**OTHER INFORMATION**



**15 players**



**HCL= 1.77m**



**3+**

**Kaal = 1032 kg**

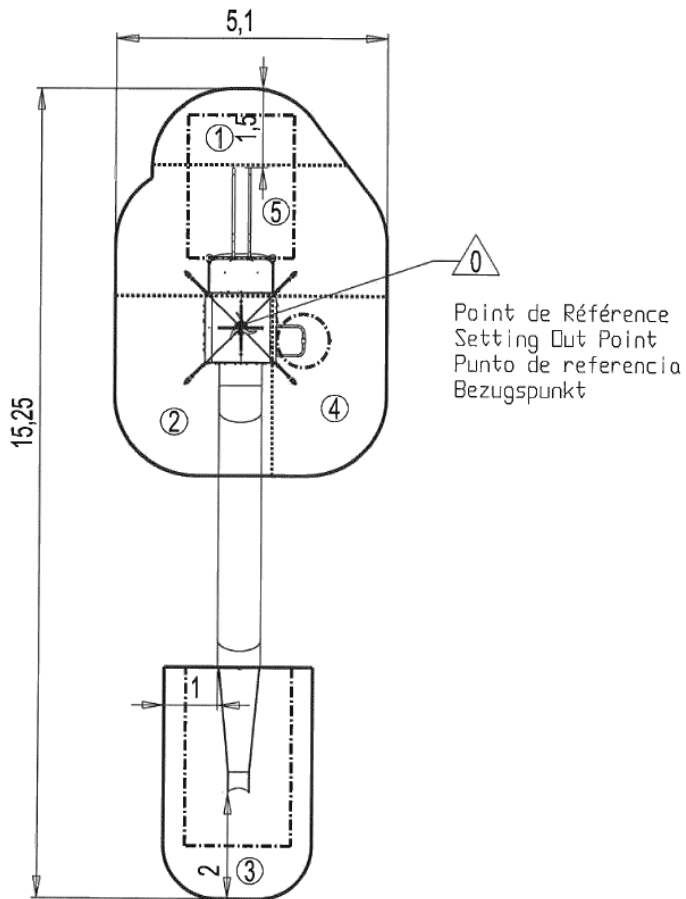
**Raskeim detail = 64 kg**

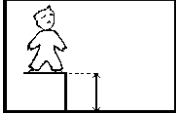
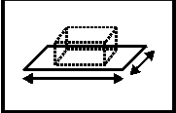
Installation of equipment

Impact area =

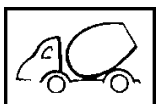
 Impact area

 Free space



		
①	0.6m	4m <sup>2</sup>
②	0.97m	9.5m <sup>2</sup>
③	1m	12m <sup>2</sup>
④	1.17m	7m <sup>2</sup>
⑤	1.77m	12m <sup>2</sup>

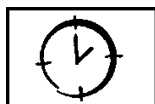
**INSTALLATION**



2.7m<sup>3</sup>



4



99h00

**CERTIFICATIONS**

