



# L'aventure dans la nature

(technical specification)

J49417



1- **The different posts** are made from sap free robinia. The robinia is sanded and has had its bark removed. Robinia is naturally rot proof and does not require any additional chemical protection; it is equally extremely resistant to attacks from external sources (insects, fungi, climatic variations), guaranteeing the long term durability of the playground equipment.



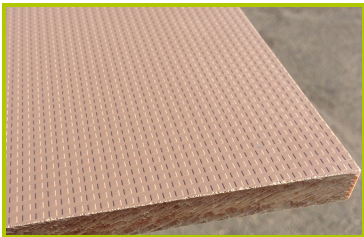
2- **The 95x95mm and 125mm diameter posts** are made of painted galvanised steel. The grained finish has a slightly undulating surface for increased scratch resistance.



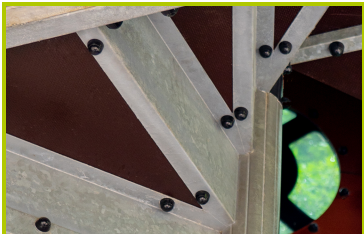
3- **The boards** are made from sap free robinia. The robinia is sanded and has had its bark removed. Robinia is naturally rot proof and does not require any additional chemical protection; it is equally extremely resistant to attacks from external sources (insects, fungi, climatic variations), guaranteeing the long term durability of the playground equipment.



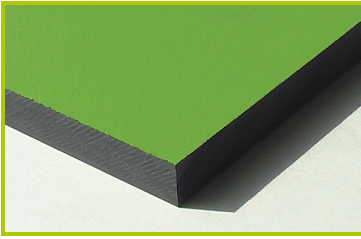
4- **The panels** are made from larch (plank sizes 140 x 27mm / 45 x 68mm). Larch is naturally resistant and long lasting.



5- **The platforms and the steps** are made from a 12.5mm thick textured and non-slip compact material (HPL).



6- **The structure of the stairs** is made of galvanised steel.



7- **The coloured panels** are made from a 13mm thick compact material (HPL). Robust in construction, it has excellent weather and vandal resistance properties.



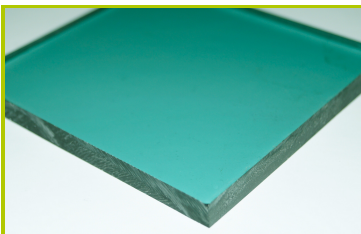
8- **The tubes** are made of 40mm diameter stainless steel, guaranteeing lasting durability and reliability of the equipment.



9- **The 16mm diameter ropes** are made of galvanised steel cable covered with polyester. The cables are linked together and held in place by injected polyamide spheres.



10-**The tubular slide** is made of stainless steel.



11-**The portholes** are made from 8mm thick methacrylate (PMMA).



12-**The fixings** are made of stainless or plated steel and protected by anti-vandalism polyamide caps.