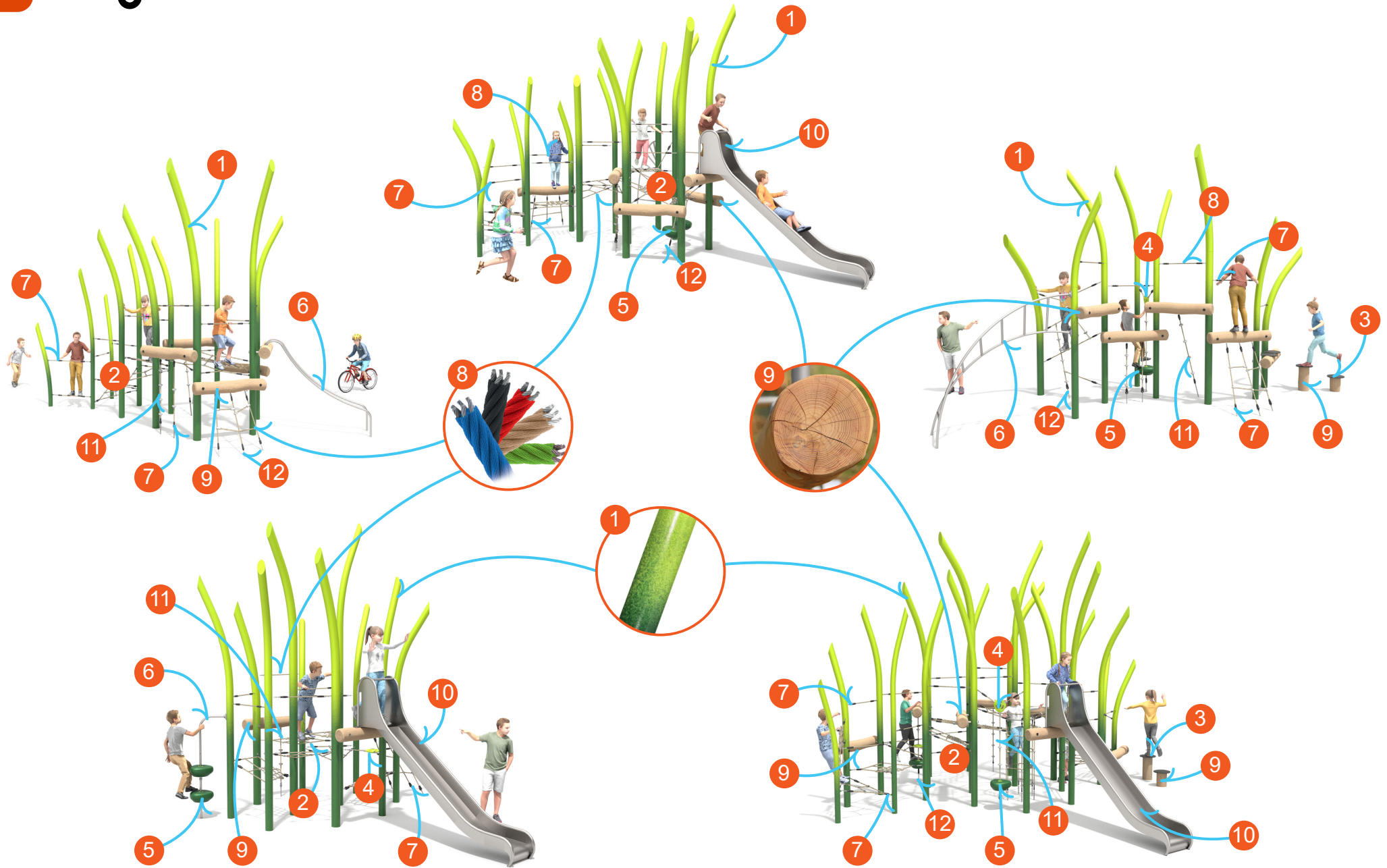


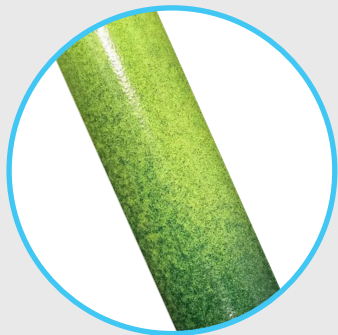
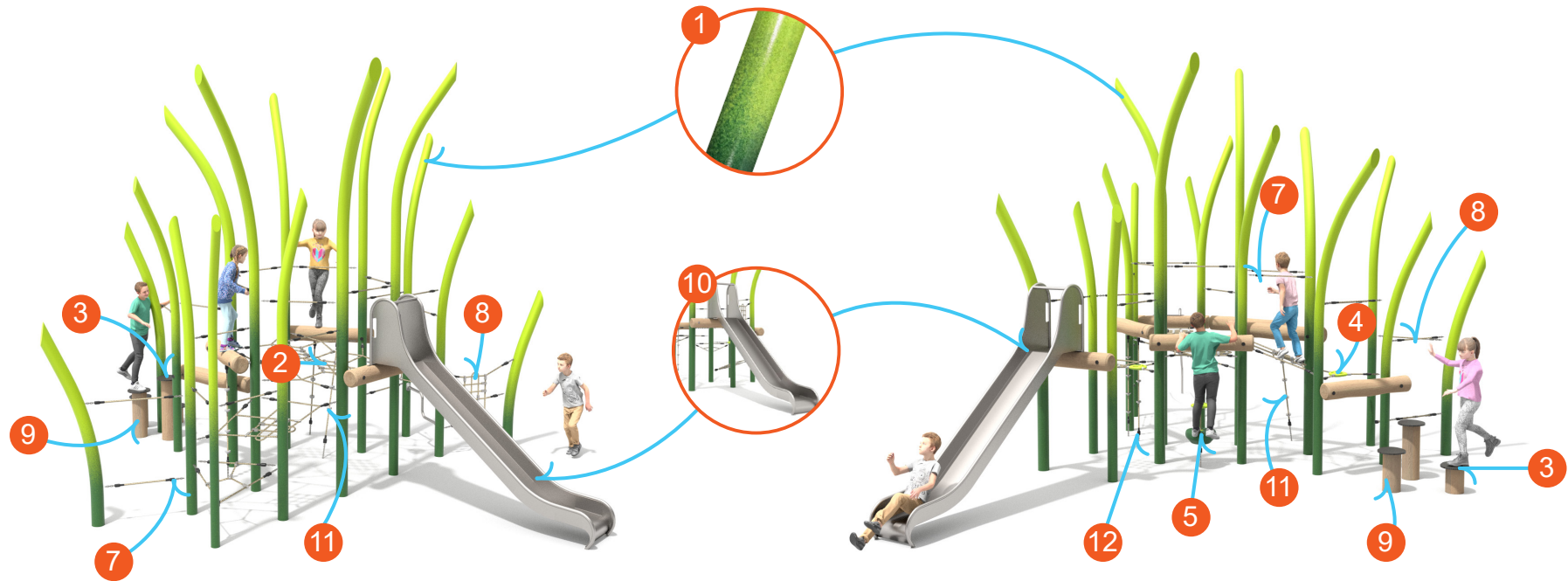


Buglo

Flora Play

MATERIAL SPECIFICATION





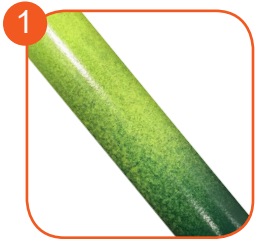
GRADIENT TECHNOLOGY

A painting technique that allows combining two colors, which smoothly blend into each other. It enables achieving a natural colour fusion effect.

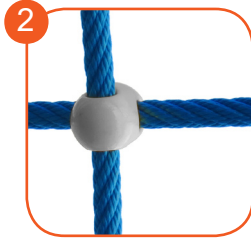


Gradient Technology

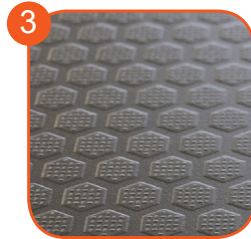
enables combining any two colours from our palette. Smooth tonal gradation guarantees unique visual effect.



1
Solid construction made of black steel S235JR (\varnothing 88,9 - 133 mm), cleaned in the sandblasting process. Protected against corrosion by galvanizing and powder coating with polyester paint QUALICOAT attested.



2
Solid and esthetic rope connectors made of injection molded polyamide.



3
Anti-slip 18 mm Hex platform.



4
Handle made of rotomoulded LDPE type material



5
The passage module is made of a 6mm stainless steel chain, 15 mm thick HDPE boards and an 18 mm thick HDPE non-slip HDPE board.



6
Solid construction made of stainless steel AISI 304 totally resistant to weather conditions. Solid construction made of stainless steel AISI 304 totally resistant to weather conditions.



7
Rope endings pressed in a sleeve made of durable aluminum alloy.



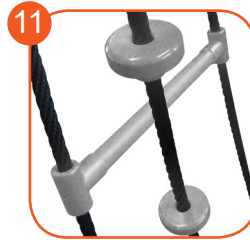
8
Polypropylene ropes ppmultiply type with a steel core and a diameter of 16 mm.



9
Natural Robinia logs from European plantations. The wood has a FSC certificate, which ensures that products come from responsibly managed forests.



10
Slide made of stainless steel AISI 304. The metal sheet is 2 mm thick and the end section is finished with a band made of pipe 33,7 mm.



11
Rope ladder steps and rope knots made of injection molded polyamide.



12
Attested 6 mm stainless steel chains.

